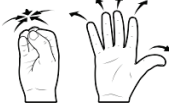



HOW TO USE THE HOLOLENS



OPEN THE MAIN MENU WITH A BLOOM MOTION
To make a bloom movement, open your hand in front of your face as if it were a quick blooming flower.




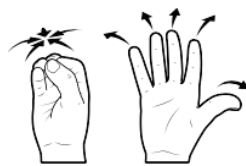
SELECT WITH AN AIR TAP
Place your finger in the ready position (Refer to the image above on the left) in front of your face. Press your finger down to tap, click, or select

HAND MOTIONS



1. TURN THE HOLOLENS ON

Press the button on the back of the HoloLens to power on and wait for the icon  to disappear



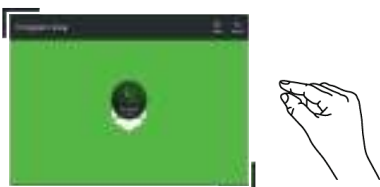
2. MAKE A BLOOM MOTION

If you do not see a "ThingWorx View Window", do a bloom movement to open the main menu
To make a bloom movement, open your hand in front of your face as if it were a quick blooming flower.



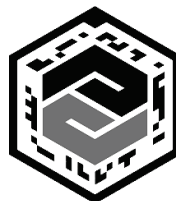
3. SELECT WITH AN AIR TAP

Once the room has been mapped, point the center dot at the "ThingView" window and either say "Select", use the clicker, or do an Air Tap (hand motions pictured above)



4. PLACE THE WINDOW

Once the window for the ThingWorx View window opens, you must place it. To do this, say "Select" or Air Tap. From here, repeat step 2



5. ALIGN THINGWORX ICON

Once the ThingWorx Icon appears in the center of your view, align the icon with the Thingmark on the table to begin the experience.



5. NAVIGATE THE EXPERIENCE

Once the experience has loaded, say "Next" to go to the next part of the experience, or use the clicker on the navigation buttons to the right of the experience



AR: SEE HOW IT WORKS

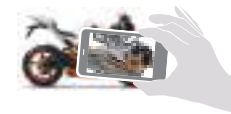
DON'T HAVE A HOLOLENS? DOWNLOAD THE THINGWORX APP



Open Thingworx View on your mobile device.



Scan the ThingMark.



Enjoy the Experience!

VALUE OF AR ACROSS THE ENTERPRISE

 DESIGN	 MANUFACTURE	 SELL	 SERVICE	 TRAIN	 OPERATE
Collaborative Design Review	Maintenance Work Instructions	Virtual Product Demonstration	Service Manual & Instructions	Job-specific Training	Heads-up Display
Digital Design Review	Performance Dashboards	Augmented Brand Experience	Service Inspection & Verification	Safety & Security Training	Augmented Operator Manual
Augmented Interface	Operator & Assembly Work Instructions	Retail Space Optimization	Remote Expertise	Expert Coaching	Augmented Interface