

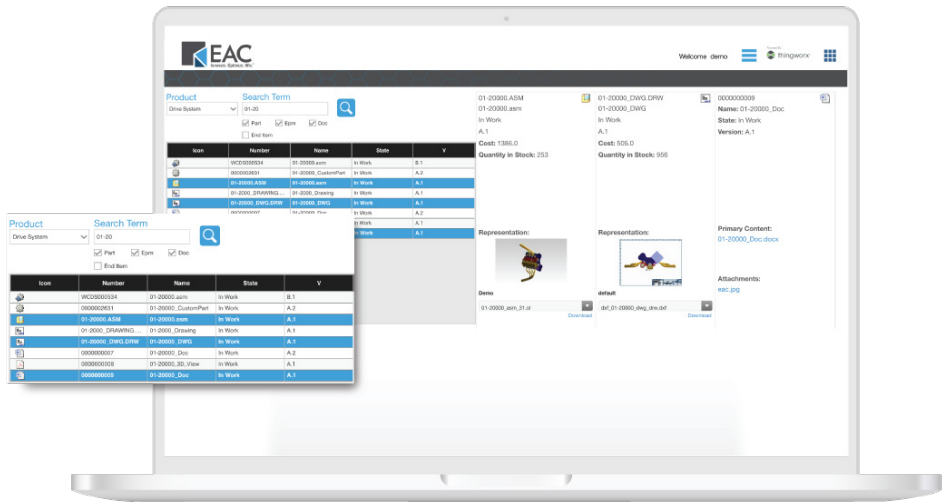
quick search

EAC PRODUCTIVITY APPS FOR WINDCHILL

Finding items in Windchill couldn't be easier.

This app allows users to easily find items in Windchill. Object oriented technologies like Windchill often require users to specify object types before executing a content search. This requires users to have an understanding of how Windchill objects are related. Quick Search navigates myriad relationships automatically!

Increase user adoption, satisfaction, and PLM system usage.



Quick Search provides a simple way for users to find content in Windchill. It removes the need for users to apply an understanding of how Windchill objects are related in order to find the information needed to do their job.

This EAC Productivity App allows users to simplify their interaction with an object oriented PLM system. Simply search using a number or attribute and return relevant results from across your PLM environment.

Easily Submit

01

Numbers

02

Character Strings

03