

# CREO SIMULATION LIVE

Real-time feedback as  
you design



**What if your 3D CAD software could provide design feedback in real time?**

It can. With Creo Simulation Live, you define a few simple conditions, and the software works in the background to give you instantaneous, dynamic feedback in your Creo modeling environment.



It's no secret that the pressure is building on designers to create lighter, faster, and stronger products at lower cost that work the first time. Creo Simulation Live gives you real-time feedback on your design decisions as you make them. This fast, easy-to-use tool is fully integrated into the 3D CAD modeling environment. Now you can iterate more quickly, generate more options, and design with greater confidence.

Each time you make a change, it's analyzed in seconds. That's not just convenience and speed, that's design guidance as a normal part of your workflow. No need to simplify geometry, create a mesh, or move between windows. Get to your best work faster, and enjoy the benefits of a tool developed specifically for the design engineer.

**What might you discover as you create and test multiple design variations?**

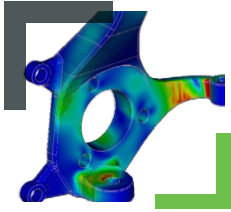
## FEATURES AND BENEFITS >

- 1 Real-time: Instantaneous simulation results for parts and assemblies directly in the modeling environment.
- 2 Interactive: Analysis updates dynamically as users edit or create features.
- 3 Confidence: Powered by ANSYS technology.
- 4 Ease of use: Run your first simulation in minutes. No need for geometry preparation, meshing, or waiting for results.
- 5 Discover problems earlier in the design process when they are easier and less expensive to fix.
- 6 Produce products that more quickly meet functional requirements, and explore more design alternatives faster.
- 7 Reduce the wait times associated with traditional simulation tools.
- 8 Save analyst time and cost for high-end analysis while eliminating bottlenecks.

**REQUEST A DEMO >>**

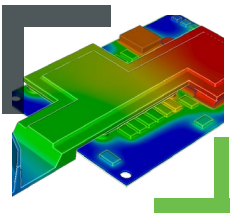


## CREO SIMULATION LIVE, POWERED BY ANSYS\* >>>



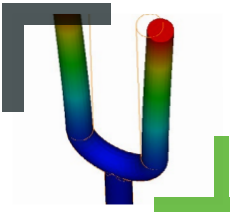
### Structural Analysis

- Determine the structural integrity of components subject to real-world constraints and loads
- Examine stress and deflection results



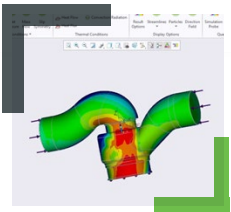
### Thermal Analysis

- Analyze the effects of intense heat or cold by adding boundary conditions to your geometry



### Modal Analysis

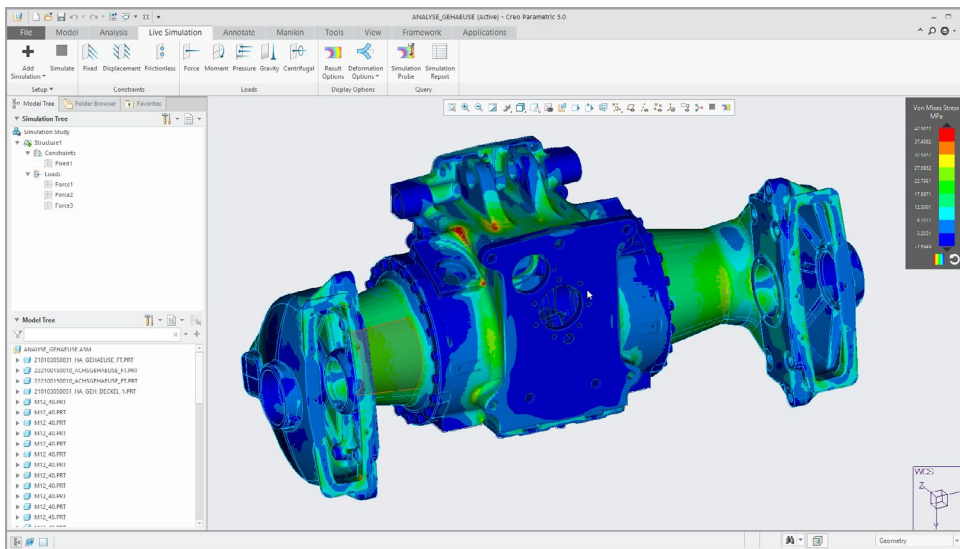
- Evaluate and predict the natural frequencies of your system and the associated mode shapes



### Fluid Flow Simulation\*\*

- Complete real-time fluid dynamics tool
- Designed for engineers
- Flow volume geometry extraction, internal and external flow, interactive graphing, streamlines, particle flow





Instantly see the impact of your design decisions in the modeling environment.

## PLATFORM SUPPORT AND SYSTEM REQUIREMENTS >

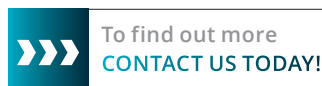
Please note that Creo Simulation Live can only be used on machines with the following GPU specifications:

- 1] Dedicated NVIDIA CUDA-enabled graphics card.
- 2] Minimum 4 GB video RAM (8 GB video RAM recommended).

**PLEASE NOTE:** \*ANSYS-powered products are not eligible for Remix or Restack.  
\*\* Fluid Flow Simulation is only available in Creo Simulation Live Plus.



Creo is a 3D CAD solution that helps you build better products faster by accelerating product innovation, reusing the best of your design and replacing assumptions with facts. Go from the earliest phases of product design to a smart, connected product with Creo. And with augmented reality in each seat of Creo, everyone can easily visualize your designs. In the fast-changing world of the Industrial IoT, no other company can get you to substantial value as quickly and effectively as PTC.



© 2020, PTC Inc. (PTC). All rights reserved. Information described herein is furnished for informational use only, is subject to change without notice, and should not be taken as a guarantee, commitment, or offer by PTC. PTC, the PTC logo, and all PTC product names and logos are trademarks or registered trademarks of PTC and/or its subsidiaries in the United States and other countries. All other product or company names are property of their respective owners. The timing of any product release, including any features or functionality, is subject to change at PTC's discretion. [J14310-CREO-Simulation-Live-Datasheet -0520](#)