

# CREO+: CAPABILITIES AND PACKAGES



Creo+ combines the power and proven functionality of Creo delivered as a SaaS product, with new cloud-based tools to enhance collaboration, improve accessibility for engineers, and simplify CAD administration.

# WHAT IS CREO+?

Creo+ combines the power and proven functionality of Creo, delivered as a SaaS product, with new cloud-based tools to enhance collaboration, improve accessibility, and simplify license management. Creo+ includes collaboration tools to enable multiple team members to review, explore and edit designs - in real time. CAD administrators will appreciate the cloud-based tools for license management, deployment and telemetry services. Creo+ is upwards compatible with on-premises versions of Creo, for better interaction with engineering colleagues and suppliers. Get the best of both worlds – proven Creo technology, combined with cloud-connected collaboration and enhanced administrative tools.

- All the capabilities of on-premises Creo.
- New cloud-based collaboration to enable team members to review and edit designs - in real time.
- Simplified license management and deployment capabilities to minimize time spent on software updates and installations.
- Telemetry services to highlight training and license adjustment opportunities.
- Fully upwards compatible with on-premises versions of Creo, for better interaction with colleagues and suppliers.
- Tight integration with Windchill.

## CAD BENEFITS OF SAAS - EXPANDING THE BENEFITS OF DIGITAL TRANSFORMATION

### **ACCELERATE INNOVATION WITH REAL-TIME COLLABORATION:**

Multiple contributors can work concurrently in real-time for improved communication and enhanced innovation throughout the product design lifecycle.

### **EFFICIENT LICENSE MANAGEMENT:**

Reduce time and effort of license management and deployment, using cloud-based desktop tools. Deliver required licenses to groups and users efficiently and at scale.

### **BETTER USER EXPERIENCE:**

Automatic updates ensure all users have access to the latest improvements.

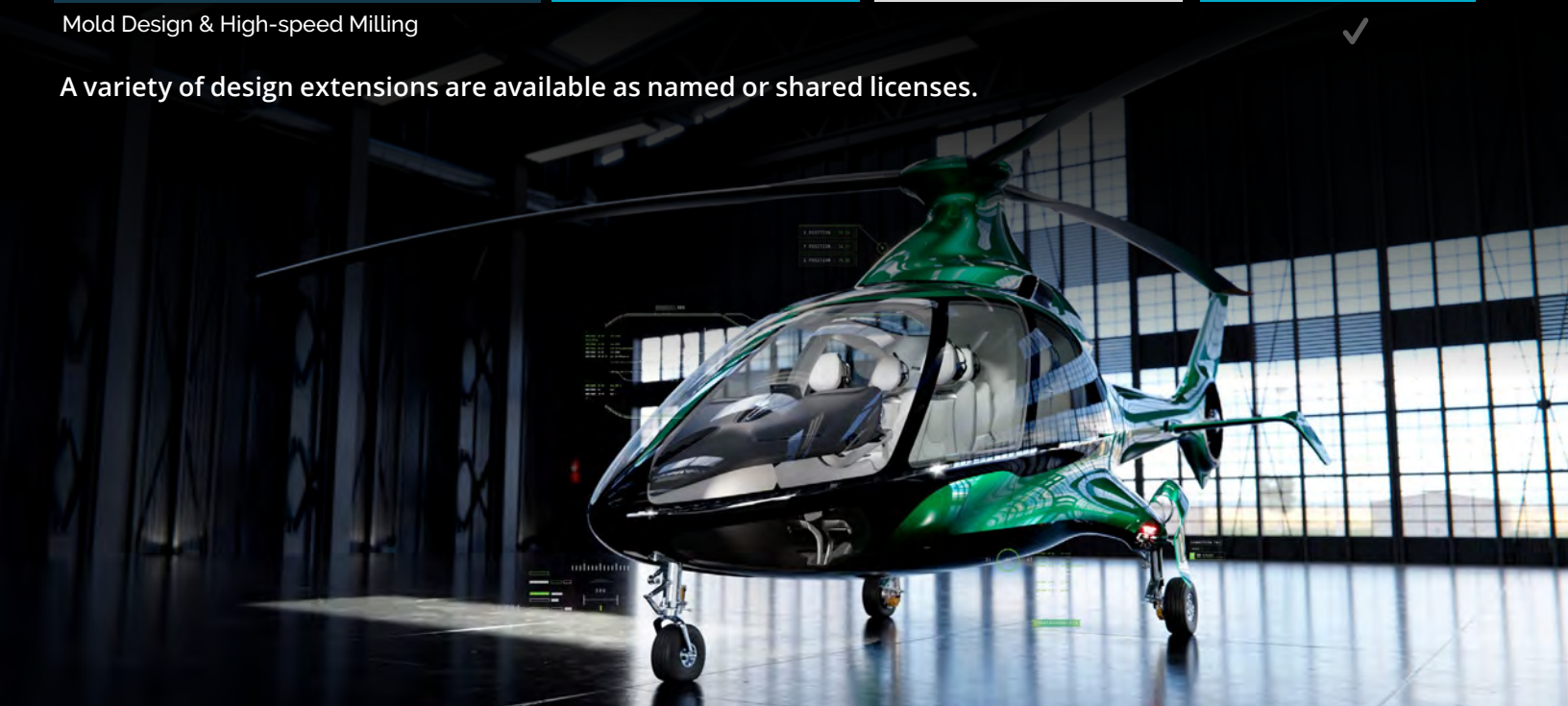
### **DATA SECURITY:**

Intellectual property is protected through better access control. Avoid sending files through email and unsecured servers.

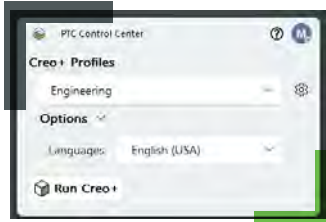
# CREO+ DESIGN PACKAGES

	Design Essentials	Design Advanced	Design Advanced Professional
Industry Leading 3D CAD Capabilities	✓	✓	✓
PTC Control Center	✓	✓	✓
Real-time Collaboration	✓	✓	✓
Augmented Reality Design Visualization	✓	✓	✓
Top Down Design & Concurrent Engineering		✓	✓
Prismatic & Multi-surface Milling		✓	✓
Mathcad		✓	✓
Advanced Surfacing & Additive Manufacturing			✓
GD&T & Tolerance Analysis			✓
Mold Design & High-speed Milling			✓

A variety of design extensions are available as named or shared licenses.



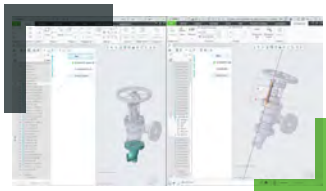
# CLOUD-BASED CAPABILITIES AVAILABLE ONLY WITH CREO+



## Control Center - License Management

The PTC Control Center, powered by Atlas\*, streamlines the management and deployment of Creo across your organization. Accessed using a simple cloud-based interface, you can streamline the management of license entitlements and easily deploy and update Creo organizationally without any user involvement. Centralized telemetry improves visibility into the usage of Creo to help you better understand license and training needs.

- Centrally manage and deploy of all entitlements.
- Minimizes the time spent installing and upgrading software.
- Create and manage group profiles and individual users for simplified access and management.
- Deploy Creo+ updates automatically, so all users are on the same version of the software.
- Access telemetry to understand how software is being used.



## Real-Time Collaboration

Creo+ enables you to collaborate with multiple contributors in real-time using dedicated workspace sessions. Changes across all users are automatically synchronized, ensuring that you are working on the latest version of the design. The session also tracks and displays changes as they happen so you can better understand what other users have done. To enable rapid iteration, users can also create branching design variations and merge them back into the main design at any time.

- Create real-time collaboration sessions with a dedicated workspace for multiple collaborators within and outside of your organization.
- You can add or remove collaborators to any of your session at any time.
- Users can see everyone in a session and what parts they are modifying.
- Real-time synchronization prevents wasted time by ensuring everyone is working on the latest version.
- Prevents design conflicts by ensuring only one user at a time can modify a specific part.
- Extensive branching capabilities enable users to explore numerous design variations simultaneously without impacting the work of other collaborators prior to selecting a final approach.
- User notes and automatic notifications help contributors stay aligned, improving productivity and saving on time.
- Create as many collaboration sessions as needed to work on different designs or different parts of the same design.

\*Atlas drives real-time collaboration across business functions with the cloud-based applications of PTC technology that enable your teams to be more agile, innovate together, and scale faster.

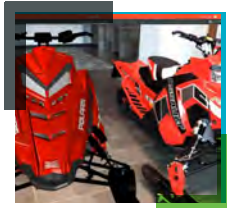


# CAPABILITIES AVAILABLE WITH CREO AND CREO+



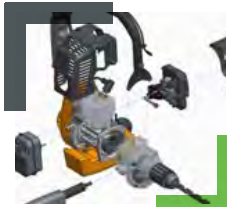
## Industry Leading 3D CAD Capabilities

- For more than 30 years, thousands of companies have relied on Creo's robust set of 3D CAD capabilities.
- 3D Part & Assembly Design
- Automatic 2D Drawing Creation
- Parametric & Freestyle Surfacing
- Assembly Management & Performance
- Sheet Metal Design
- Mechanism Design
- Plastic Part Design
- Direct Modeling (Flexible Modeling)
- Additive Manufacturing
- Augmented Reality



## Augmented Reality Design Visualization

- In every seat. With a few clicks, you can author and publish an AR experience from inside your Creo model.



## Top Down Design & Concurrent Engineering

- Plan out the assembly's skeleton so your team can work in parallel. When primary design intent changes, the assemblies adapt.



## Prismatic & Multi-surface Milling

- Go smoothly from product design to manufacturing with this specialist for prismatic production machining.



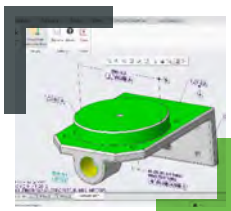
### Additive Manufacturing

- Go from concept to print check all in Creo and give your design production-ready surfaces.



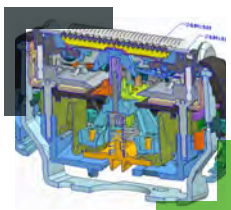
### Advanced Surfacing

- Combine the power of parametric modeling and flexibility of freeform surfacing.



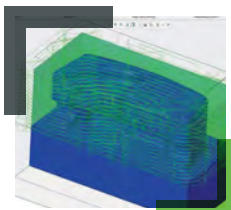
### Geometric Dimensioning & Tolerancing

- Expert guidance on the application of GD&T and validation that you've applied GD&T correctly.



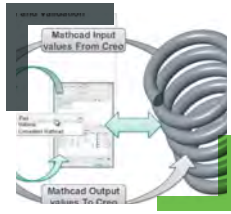
### Tolerance Analysis

- Analyze and document geometric tolerances directly on 3D CAD models.



### Mold Design & High-speed Milling

- Improve the efficiency and productivity of your mold design and tooling, and benefit from high-speed machining tool paths.



## PTC Mathcad

*Perform, analyze, and share your most vital calculations:*

- Conduct complex engineering calculations to validate your designs
- Comprehensive unit support for numeric and symbolic calculations, functions, solve blocks, tables, vectors/matrices, and plots
- Lock content to prevent viewing and hide proprietary information

# >>> THE CREO ADVANTAGE

Creo is the 3D CAD solution that helps you accelerate product innovation to build better products faster. Easy-to-learn Creo uses a model-based approach to seamlessly take you from the earliest phases of product design to manufacturing and beyond. Combining powerful, proven functionality with new technologies including generative design, real-time simulation, advanced manufacturing, IIoT and augmented reality, Creo helps you iterate faster, reduce costs and improve product quality. Creo is also available as a SaaS product, providing innovative cloud-based tools for real-time collaboration and streamlined license management and deployment. The world of product development moves quickly, and only Creo delivers the transformative tools you need to build competitive advantage and gain market share.

Please visit the [PTC support page](#) for the most up-to-date platform support and system requirements.

© 2023, PTC Inc. (PTC). All rights reserved. Information described herein is furnished for informational use only, is subject to change without notice, and should not be taken as a guarantee, commitment, or offer by PTC. PTC, the PTC logo, and all PTC product names and logos are trademarks or registered trademarks of PTC and/or its subsidiaries in the United States and other countries. All other product or company names are property of their respective owners. The timing of any product release, including any features or functionality, is subject to change at PTC's discretion.

271300\_Creo+ Capabilities and Packages Overview\_0223